

SPD500C



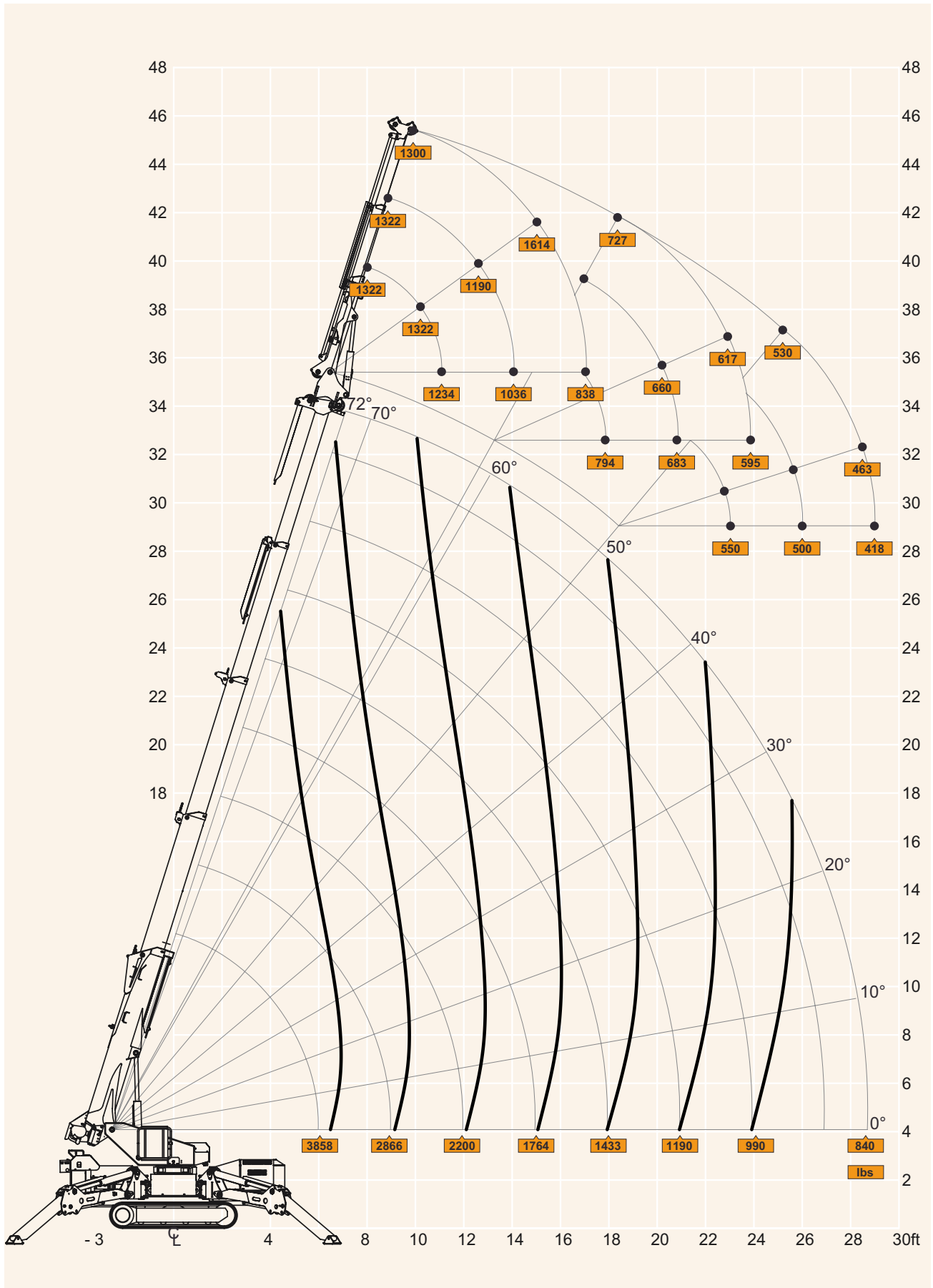
LIFT ANYWHERE YOU NEED!



**UNI EN 12999
ANSI/ASME B30.5-2004**

 (ft/lbs)

SPDS00C LOADING DIAGRAM



TECHNICAL SHEET

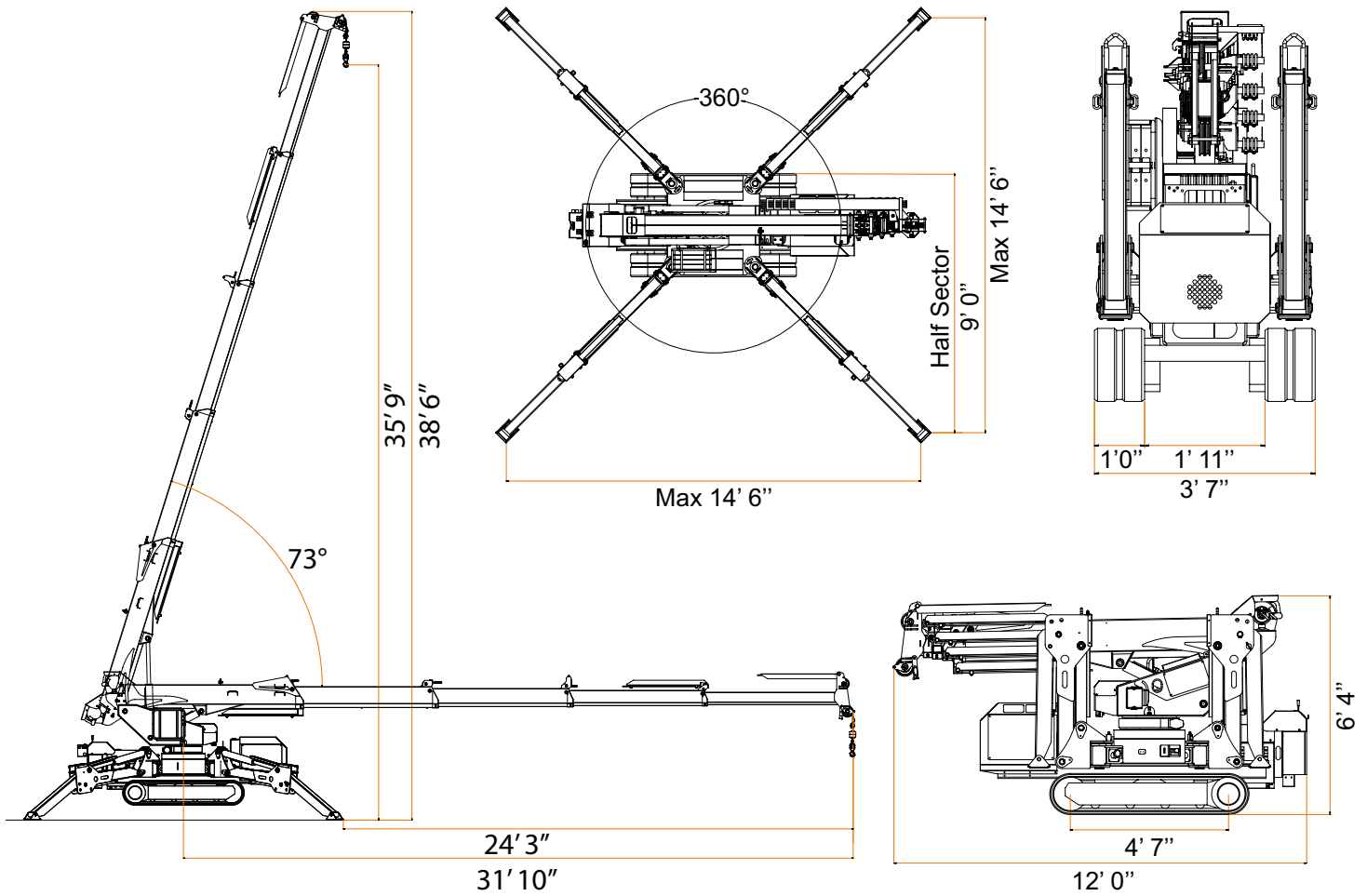
Dimensions	12'0"x 3'7"x 6'4"	ft
Weight	6173	lbs
Loading momentum	36.888	lbs-ft
Maximum SWL	3696	lbs
Rotation	360	°
Tilting	-5/+76	°
Max SWL for winch-single fall	1322	lbs
Winch rope length	195	ft
Controls	manual	
Drive system	hydrostatic	
Max gradient	20	°
Track area	4' 7" x 1' 0"	ft
Max track loading	5.68	PSI
Outriggers	hydraulic, multi position	
Max outrigger load	4629	lbs
Standard Equipment		
Stability control system (SCS), Pressure relief valves, Overcentre lock valves, 4 Outrigger pads, Remote control, Winch load limiter, double pulley		
Optional Equipment		
220V - 1 phase power pack, color, Double pulley block, No marking tracks, Jib 600M, Jib 600H, 1 person manbasket		

SPD 500 CD

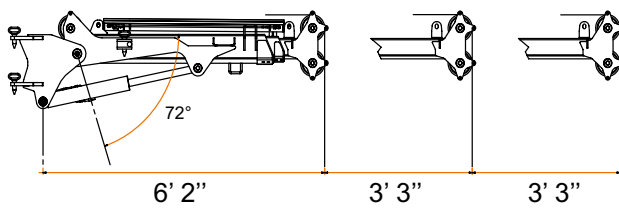
Motor	Lombardini 25LD425	
Speed	3	
Fuel	Diesel	
Tank capacity	15	l
Specific fuel consumption @ 2800RPM	230	g/kWh
Motor power	14/19	kW/hp
Electrical system voltage	12	V

Notes: All specifications and features herein described can be changed without prior advice. All indicated data are indicative only and are not binding as crane performs differently depending on its use.

SPD500C



JIB600H



TECHNICAL SHEER

Weight	Peso	Gewicht	Peso total	Poids total	463 lbs
Max. SWL	Portata massima	Max. Tragfähigkeit	Carga Máxima	Portée max.	1322 lbs
Tilting	Angolo braccio	Auslegerverstellwinke	Inclinación de la pluma	Angle flèche	0° - 72°



Imai srl via Campardone, 7 Z.I. 31014 Colle Umberto TV Italy
 tel. +39 0438.430171 fax +39 0438.430115
 www.imai.it • www.jekko.it • info@jekko.it